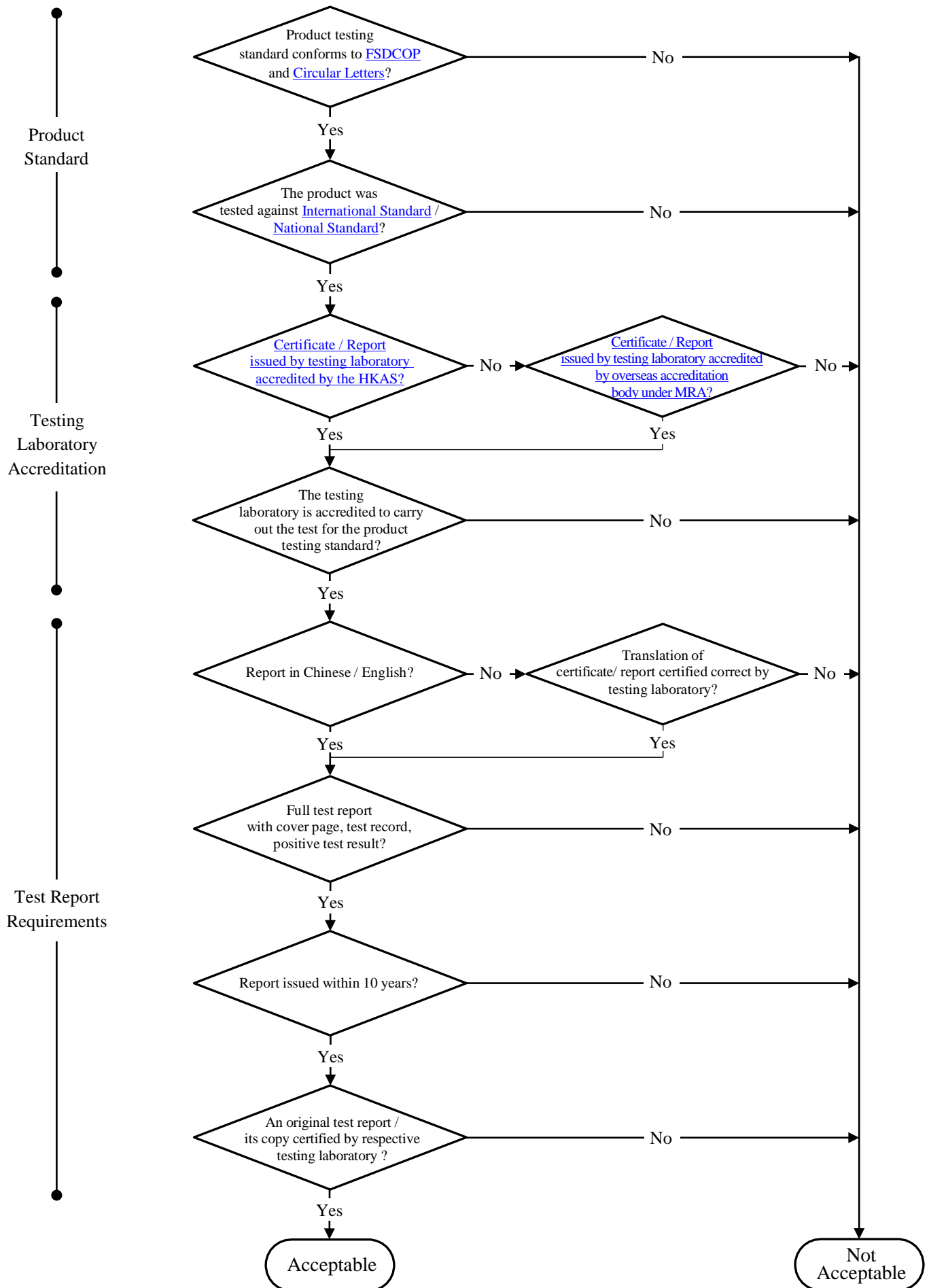


## Test Certificate / Report acceptable to the HKFSD

**Product Testing** mainly focuses on the testing of product samples to a prescribed standard and whether the testing was carried out at testing laboratory.



# Product Standards of Fire Service Installations and Equipment (FSI) Acceptable to Hong Kong Fire Services Department (HKFSD)

Other than the standards of the FSI is specified in the “**Codes of Practice for Minimum Fire Service Installations and Equipment and Inspection, Testing and Maintenance of Installations and Equipment**” the Fire Services Department accepts relevant International or National standards applicable to the FSI or products. Please click on the hyperlinks and check for relevant standards.

## International Standards

- ISO - [International Organization for Standardization](#)
- IEC - [International Electrotechnical Commission](#)

## National Standards

- EN - European Standard
  - ✓ [European Committee for Standardization \(CEN\)](#) ;
  - ✓ [European Committee for Electrotechnical Standardization \(CENELEC\)](#) ;
  - ✓ [European Telecommunications Standards Institute \(ETSI\)](#)
- Standards developed by respective National Standards Bodies (NSBs) of [International Organization for Standardization](#) (ISO). Examples of NSBs' standards are:
  - ✓ USA          ANSI - [American National Standards Institute \(ANSI\)](#)
  - ✓ UK            BS - [British Standards Institution \(BSI\)](#)
  - ✓ Germany    DIN - [German Institute for Standardization \(DIN\)](#)
  - ✓ China        GB - [Standardization Administration of the People's Republic of China \(SAC\)](#)
  - ✓ Japan        JIS - [Japanese Industrial Standards Committee \(JISC\)](#), etc.
- Standards developed by Standards Developing Organizations (SDOs) accredited by respective National Standards Bodies (NSBs). Examples of SDOs' standards are:
  - ✓ FM          - [FM Approvals](#)
  - ✓ NFPA        - [National Fire Protection Association](#)
  - ✓ UL          - [Underwriters Laboratories Inc.](#), etc