

組織圖 Organisation Chart



消防處處長
陳楚鑫
Director of Fire Services
Chan Chor-kam, Andy



消防處副處長
黎文軒
Deputy Director of Fire Services
Lai Man-hin, David



助理處長 (港島)
黃世銓
Assistant Director
(Hong Kong)
Wong Sai-chuen



助理處長 (九龍)
岑永昌
Assistant Director
(Kowloon)
Shum Wing-cheong, Alex



助理處長 (新界)
李建日
Assistant Director
(New Territories)
Li Kin-yat, Daryl



助理處長 (總部)
羅紹衡
Assistant Director
(Headquarters)
Lo Siu-hang, Shane



助理處長 (牌照及審批)
劉敏明
Assistant Director
(Licensing & Certification)
Lau Mun-ming, Jose



助理處長 (消防安全)
吳建志
Assistant Director
(Fire Safety)
Ng Kuen-chi, James



助理處長 (救護)
楊世謙
Assistant Director
(Ambulance)
Yeung Sai-him, John



副消防總長 (港島)
楊鍾孝
Deputy Chief Fire Officer
(Hong Kong)
Yeung Chung-hau, Jones



副消防總長 (九龍)
司徒日新
Deputy Chief Fire Officer
(Kowloon)
Szeto Yat-san



副消防總長 (新界北)
何乃海
Deputy Chief Fire Officer
(New Territories / North)
Ho Nai-hoi



副消防總長 (新界南)
李亮明
Deputy Chief Fire Officer
(New Territories / South)
Li Leung-ming



副消防總長 (總部)
吳偉強
Deputy Chief Fire Officer
(Headquarters)
Ng Wai-keung



副消防總長 (牌照及審批)
劉克能
Deputy Chief Fire Officer
(Licensing & Certification)
Robert Lau



副消防總長 (消防安全)
張溢昌
Deputy Chief Fire Officer
(Fire Safety)
Cheung Yat-cheong,
Dominic



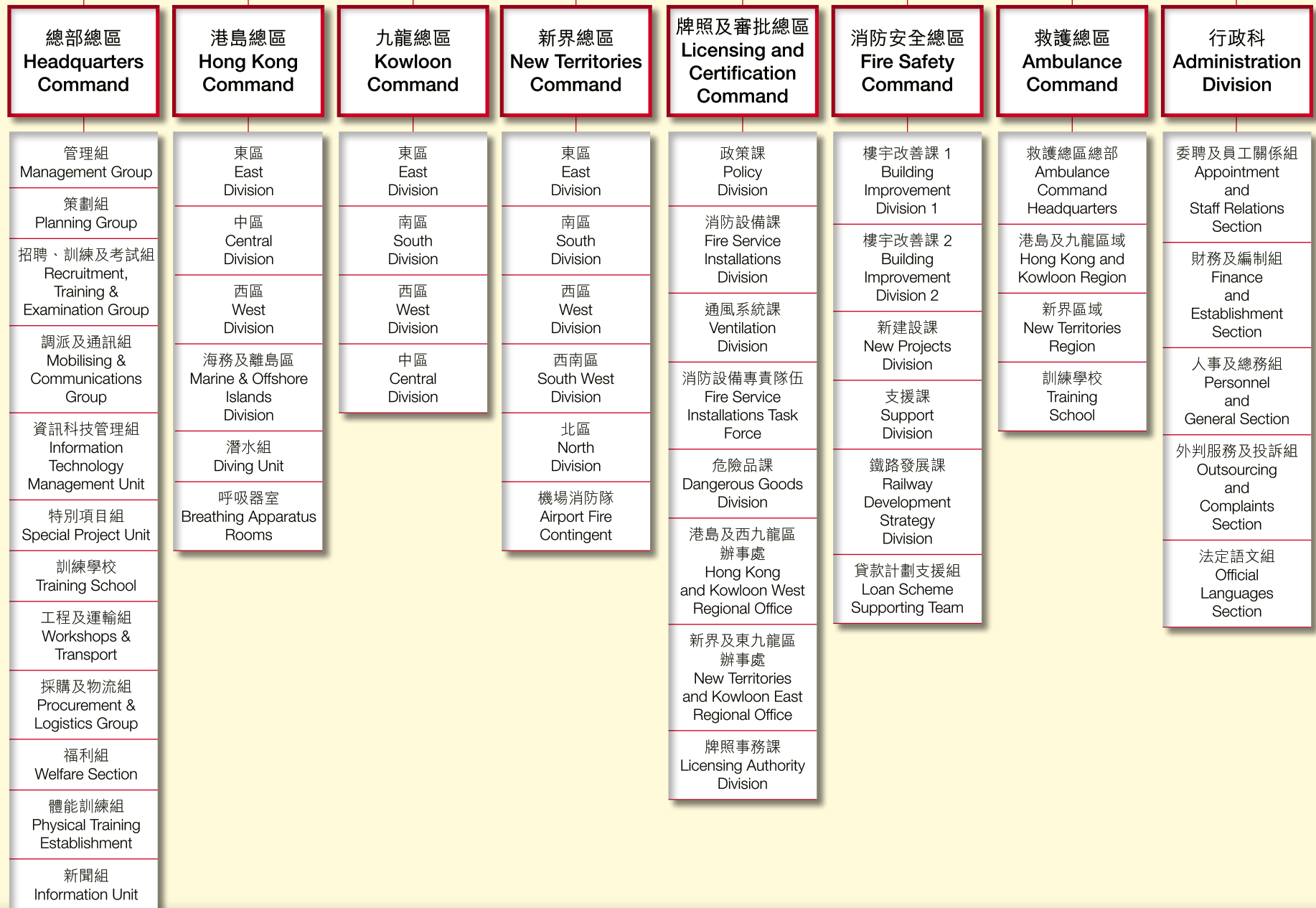
副救護總長
沈國良
Deputy Chief Ambulance
Officer
Shum Kwok-leung



部門秘書
張胡婉嫻
Departmental Secretary
Cheung Woo
Yuen-mee, Daphne

處長
Director of Fire Services

副處長
Deputy Director of Fire Services



消防局及救護站

Fire Stations and Ambulance Depots

港島總區 Hong Kong Command

東區 East Division

| | |
|--------|---------------------------|
| 北角消防局 | North Point Fire Station |
| 筲箕灣消防局 | Shau Kei Wan Fire Station |
| 柴灣消防局 | Chai Wan Fire Station |
| 西灣河消防局 | Sai Wan Ho Fire Station |
| 銅鑼灣消防局 | Tung Lo Wan Fire Station |
| 寶馬山消防局 | Braemar Hill Fire Station |

中區 Central Division

| | |
|-------|----------------------------|
| 上環消防局 | Sheung Wan Fire Station |
| 中區消防局 | Central Fire Station |
| 港灣消防局 | Kong Wan Fire Station |
| 山頂消防局 | Victoria Peak Fire Station |
| 灣仔消防局 | Wan Chai Fire Station |
| 旭龝消防局 | Kotewall Fire Station |

西區 West Division

| | |
|---------|----------------------------|
| 堅尼地城消防局 | Kennedy Town Fire Station |
| 香港仔消防局 | Aberdeen Fire Station |
| 春坎角消防局 | Chung Hom Kok Fire Station |
| 鴨脷洲消防局 | Ap Lei Chau Fire Station |
| 薄扶林消防局 | Pok Fu Lam Fire Station |
| 沙灣消防局 | Sandy Bay Fire Station |

海務及離島區 Marine & Offshore Islands Division

| | |
|-----------|-----------------------------------|
| 中區滅火輪消防局 | Central Fireboat Station |
| 北角滅火輪消防局 | North Point Fireboat Station |
| 香港仔滅火輪消防局 | Aberdeen Fireboat Station |
| 青衣滅火輪消防局 | Tsing Yi Fireboat Station |
| 長洲滅火輪消防局 | Cheung Chau Fireboat Station |
| 屯門滅火輪消防局 | Tuen Mun Fireboat Station |
| 愉景灣消防局 | Discovery Bay Fire Station |
| 大澳(分區)消防局 | Tai O Fire Station (Sub-division) |
| 舊大澳消防局 | Tai O Fire Station (Old Station) |
| 梅窩消防局 | Mui Wo Fire Station |
| 長沙消防局 | Cheung Sha Fire Station |
| 南丫消防局 | Lamma Fire Station |
| 長洲消防局 | Cheung Chau Fire Station |
| 坪洲消防局 | Peng Chau Fire Station |
| 消防處潛水基地 | FSD Diving Base |

九龍總區 Kowloon Command

東區 East Division

| | |
|--------|---------------------------|
| 觀塘消防局 | Kwun Tong Fire Station |
| 油塘消防局 | Yau Tong Fire Station |
| 九龍灣消防局 | Kowloon Bay Fire Station |
| 藍田消防局 | Lam Tin Fire Station |
| 寶林消防局 | Po Lam Fire Station |
| 大赤沙消防局 | Tai Chik Sha Fire Station |

南區 South Division

| | |
|--------|----------------------------|
| 尖沙咀消防局 | Tsim Sha Tsui Fire Station |
| 紅磡消防局 | Hung Hom Fire Station |
| 尖東消防局 | Tsim Tung Fire Station |
| 油麻地消防局 | Yau Ma Tei Fire Station |

中區 Central Division

| | |
|--------|---------------------------|
| 黃大仙消防局 | Wong Tai Sin Fire Station |
| 馬頭涌消防局 | Ma Tau Chung Fire Station |
| 牛池灣消防局 | Ngau Chi Wan Fire Station |
| 順利消防局 | Shun Lee Fire Station |
| 九龍塘消防局 | Kowloon Tong Fire Station |

西區 West Division

| | |
|--------|-----------------------------|
| 旺角消防局 | Mong Kok Fire Station |
| 長沙灣消防局 | Cheung Sha Wan Fire Station |
| 荔枝角消防局 | Lai Chi Kok Fire Station |
| 石峽尾消防局 | Shek Kip Mei Fire Station |

消防局及救護站 Fire Stations and Ambulance Depots

新界總區 New Territories Command

東區 East Division

| | |
|--------|---------------------------|
| 沙田消防局 | Sha Tin Fire Station |
| 小瀝源消防局 | Siu Lek Yuen Fire Station |
| 田心消防局 | Tin Sum Fire Station |
| 馬鞍山消防局 | Ma On Shan Fire Station |
| 西貢消防局 | Sai Kung Fire Station |

南區 South Division

| | |
|--------|----------------------------|
| 葵涌消防局 | Kwai Chung Fire Station |
| 荃灣消防局 | Tsuen Wan Fire Station |
| 荔景消防局 | Lai King Fire Station |
| 梨木樹消防局 | Lei Muk Shue Fire Station |
| 深井消防局 | Sham Tseng Fire Station |
| 大欖涌消防局 | Tai Lam Chung Fire Station |

西區 West Division

| | |
|--------|------------------------------|
| 屯門消防局 | Tuen Mun Fire Station |
| 青山灣消防局 | Castle Peak Bay Fire Station |
| 天水圍消防局 | Tin Shui Wai Fire Station |
| 望后石消防局 | Pillar Point Fire Station |
| 元朗消防局 | Yuen Long Fire Station |
| 虎地消防局 | Fu Tei Fire Station |
| 流浮山消防局 | Lau Fau Shan Fire Station |
| 深圳灣消防局 | Shenzhen Bay Fire Station |

西南區 South West Division

| | |
|--------|-----------------------------|
| 青衣消防局 | Tsing Yi Fire Station |
| 青衣南消防局 | Tsing Yi South Fire Station |
| 東涌消防局 | Tung Chung Fire Station |
| 赤鱸角消防局 | Chek Lap Kok Fire Station |
| 馬灣消防局 | Ma Wan Fire Station |
| 竹篙灣消防局 | Penny's Bay Fire Station |

北區 North Division

| | |
|--------|--------------------------|
| 粉嶺消防局 | Fanling Fire Station |
| 上水消防局 | Sheung Shui Fire Station |
| 八鄉消防局 | Pat Heung Fire Station |
| 大埔消防局 | Tai Po Fire Station |
| 大埔東消防局 | Tai Po East Fire Station |
| 沙頭角消防局 | Sha Tau Kok Fire Station |
| 打鼓嶺消防局 | Ta Kwu Ling Fire Station |
| 米埔消防局 | Mai Po Fire Station |

機場消防隊 Airport Fire Contingent

| | |
|--------|-----------------------|
| 機場主局 | Main Air Fire Station |
| 機場分局 | Sub Air Fire Station |
| 海上救援西局 | West Sea Rescue Berth |
| 海上救援東局 | East Sea Rescue Berth |

救護總區 Ambulance Command

港島分區 Hong Kong Division

| | |
|---------|-------------------------------|
| 摩利臣山救護站 | Morrison Hill Ambulance Depot |
| 柴灣救護局 | Chai Wan Ambulance Station |
| 西灣河救護站 | Sai Wan Ho Ambulance Depot |
| 寶馬山救護站 | Braemar Hill Ambulance Depot |
| 摩星嶺救護站 | Mount Davis Ambulance Depot |
| 薄扶林救護站 | Pok Fu Lam Ambulance Depot |

九龍分區 Kowloon Division

| | |
|--------|--------------------------------|
| 牛頭角救護站 | Ngau Tau Kok Ambulance Depot |
| 寶林救護站 | Po Lam Ambulance Depot |
| 黃大仙救護站 | Wong Tai Sin Ambulance Depot |
| 藍田救護站 | Lam Tin Ambulance Depot |
| 大赤沙救護站 | Tai Chik Sha Ambulance Depot |
| 九龍塘救護站 | Kowloon Tong Ambulance Depot |
| 何文田救護站 | Ho Man Tin Ambulance Depot |
| 尖東救護站 | Tsim Tung Ambulance Depot |
| 馬頭涌救護站 | Ma Tau Chung Ambulance Depot |
| 白田救護站 | Pak Tin Ambulance Depot |
| 油麻地救護站 | Yau Ma Tei Ambulance Depot |
| 旺角救護站 | Mong Kok Ambulance Depot |
| 長沙灣救護站 | Cheung Sha Wan Ambulance Depot |
| 荔枝角救護站 | Lai Chi Kok Ambulance Depot |

新界北分區 New Territories North Division

| | |
|--------|---------------------------------|
| 大埔救護站 | Tai Po Ambulance Depot |
| 粉嶺救護站 | Fanling Ambulance Depot |
| 屯門救護站 | Tuen Mun Ambulance Depot |
| 元朗救護站 | Yuen Long Ambulance Depot |
| 青山灣救護站 | Castle Peak Bay Ambulance Depot |
| 深井救護站 | Sham Tseng Ambulance Depot |
| 天水圍救護站 | Tin Shui Wai Ambulance Depot |
| 流浮山救護站 | Lau Fau Shan Ambulance Depot |

新界南分區 New Territories South Division

| | |
|--------|------------------------------|
| 荃灣救護站 | Tsuen Wan Ambulance Depot |
| 梨木樹救護站 | Lei Muk Shue Ambulance Depot |
| 東涌救護站 | Tung Chung Ambulance Depot |
| 青衣救護站 | Tsing Yi Ambulance Depot |
| 竹篙灣救護站 | Penny's Bay Ambulance Depot |
| 葵涌救護站 | Kwai Chung Ambulance Depot |
| 沙田救護站 | Sha Tin Ambulance Depot |
| 田心救護站 | Tin Sum Ambulance Depot |
| 馬鞍山救護站 | Ma On Shan Ambulance Depot |

勳銜及嘉許 Honours and Awards

紀律人員 Uniformed Members

| | | 主任級 Officer | 員佐級 Other ranks |
|----------------------|--|----------------|--------------------|
| 行政長官公共服務獎狀 | Chief Executive's Commendation for Government / Public Service | | 2 |
| 行政長官社區服務獎狀 | Chief Executive's Commendation for Community Service | | 1 |
| 公務員事務局局長嘉許狀 | The Secretary for the Civil Service's Commendation | | 5 |
| 處長嘉許狀 | Director's Commendation | 6 | 3 |
| 香港消防事務卓越獎章 | Hong Kong Fire Services Medal For Distinguished Service | 1 | |
| 香港消防事務榮譽獎章 | Hong Kong Fire Services Medal For Meritorious Service | 4 | 3 |
| 香港消防事務長期服務獎章 | Hong Kong Fire Services Long Service Medal | 21 | 147 |
| 香港消防事務長期服務獎章 (第一個勳扣) | Hong Kong Fire Services Long Service Medal (1st Clasp) | 19 | 125 |
| 香港消防事務長期服務獎章 (第二個勳扣) | Hong Kong Fire Services Long Service Medal (2nd Clasp) | 13 | 131 |
| 香港消防事務長期服務獎章 (第三個勳扣) | Hong Kong Fire Services Long Service Medal (3rd Clasp) | 5 | 37 |
| 消防總長 / 救護總長嘉許 | Chief Fire Officer's / Chief Ambulance Officer's Commendation | 2 | 26 |

文職人員 Civilians

| | | |
|----------------|---|----|
| 長期優良服務獎狀 (20年) | Long Meritorious Service Certificate (20 years) | 32 |
| 長期優良服務獎狀 (30年) | Long Meritorious Service Certificate (30 years) | 15 |
| 長期優良服務獎狀 (40年) | Long Meritorious Service Certificate (40 years) | 3 |

消防及救護車輛 Fire Appliances and Ambulances

4.1 消防車輛 Fire Appliances

| 種類 Types | | 使用 On Run | 後備 / 訓練 Reserve / Training |
|--------------|---------------------------------|--------------|----------------------------------|
| 梯台車 - 53米 | Aerial Ladder Platform - 53m | 1 | 0 |
| 梯台車 - 42米 | Aerial Ladder Platform - 42m | 2 | 0 |
| 呼吸器供應車 | Breathing Apparatus Tender | 1 | 0 |
| 大型泡車 | Bulk Foam Tender | 1 | 0 |
| 重型泡車 | Crash Fire Tender | 4 | 1 |
| 起重運輸車 | Crane Lorry | 1 | 0 |
| 膳食供應車 | Canteen Van | 3 | 0 |
| 潛水裝備供應車 | Diving Tender | 5 | 1 |
| 前線指揮車 | Forward Command Car | 7 | 2 |
| 第一截擊車 | First Intervention Vehicle | 2 | 0 |
| 消防電單車 | Fire Motorcycle | 3 | 3 |
| 泡車 | Foam Tender | 4 | 0 |
| 重型炮車 | Heavy Duty Foam Monitor | 3 | 0 |
| 喉泡車 | Hose Foam Carrier | 4 | 0 |
| 喉車 | Hose Layer | 10 | 1 |
| 勾車 | Hook Lift Truck | 4 | 0 |

| 種類 Types | | 使用 On Run | 後備 / 訓練 Reserve / Training |
|-----------------|---|--------------|----------------------------------|
| 油壓升降台 | Hydraulic Platform | 65 | 9 |
| 核生化事故車 | Hazmat Tender | 1 | 0 |
| 無積升降台 | Jackless Snorkel | 2 | 1 |
| 輕型消防車 | Light Fire Appliance | 2 | 0 |
| 輕型泵車 - 泵車類型 | Light Pumping Appliance - Pumping Mode | 11 | 1 |
| 輕型泵車 - 救援車類型 | Light Pumping Appliance - Rescue Mode | 4 | 2 |
| 細搶救車 | Light Rescue Unit | 47 | 12 |
| 後勤支援車 | Logistic Support Appliance | 4 | 0 |
| 照明車 | Lighting Tender | 7 | 1 |
| 流動指揮車 | Mobile Command Unit | 5 | 0 |
| 迷你消防車 | Mini Fire Truck | 4 | 0 |
| 小型消防車 | Mini Fire Van | 4 | 0 |
| 泵車 | Major Pump | 53 | 24 |
| 流動滅火支援車 | Mobile Firefighting Support Machine | 2 | 0 |
| 小型載客車 | Mini Passenger Van | 1 | 0 |
| 小型搶救車 | Mini Rescue Truck | 4 | 0 |

消防及救護車輛

Fire Appliances and Ambulances

4.1 消防車輛 Fire Appliances

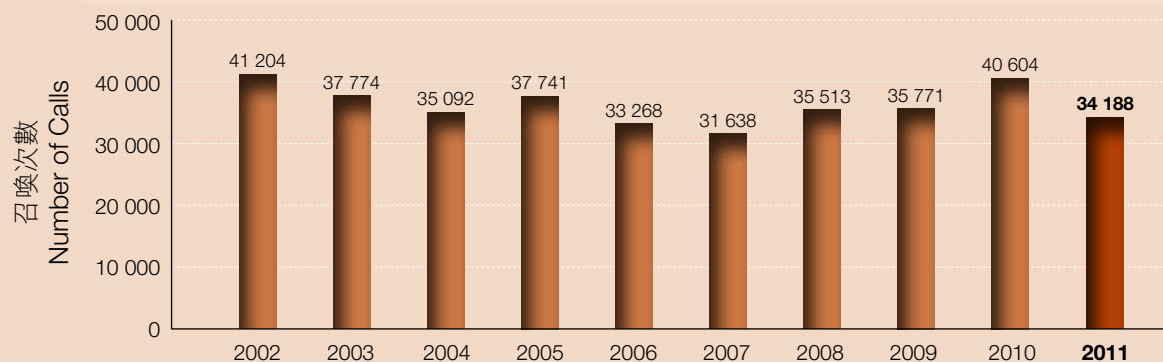
| 種類 Types | | 使用 On Run | 後備 / 訓練 Reserve / Training |
|-------------|--------------------------------|--------------|----------------------------------|
| 大搶救車 | Major Rescue Unit | 12 | 3 |
| 小型搶救車 | Mini Rescue Van | 4 | 0 |
| 小型客貨車 | Mini Van | 1 | 0 |
| 拯救車 | Rescue Tender | 5 | 1 |
| 後備重型泵車 | Reserve Heavy Pump | 7 | 2 |
| 快速截擊車 | Rapid Intervention Vehicle | 4 | 1 |
| 路軌組件拖架 | Rail Kit Trailer | 1 | 0 |
| 快艇拖架 | Speedboat Trailer | 11 | 1 |
| 司落高 | Snorkel | 1 | 1 |
| 37米旋轉台鋼梯車 | Turntable Ladder - 37m | 12 | 7 |
| 50米旋轉台鋼梯車 | Turntable Ladder - 50m | 2 | 0 |
| 52米旋轉台鋼梯車 | Turntable Ladder - 52m | 5 | 1 |
| 坍塌搜救車 | Urban Search and Rescue Tender | 1 | 0 |
| 總計 | Total | 337 | 75 |

4.2 救護車輛 Ambulances

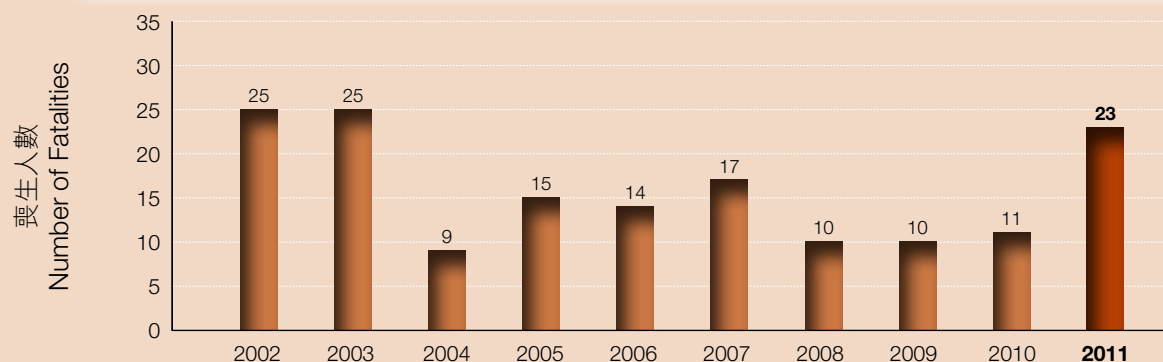
| 種類 Types | | 使用 On Run | 後備 / 訓練 Reserve / Training |
|-------------|--|--------------|----------------------------------|
| 救護車 | Ambulance | 260 | 36 |
| 救護吉普車 | Cross Country Ambulance | 2 | 0 |
| 急救醫療電單車 | Emergency Medical Assistant Motorcycle | 31 | 5 |
| 流動傷者治療車 | Mobile Casualty Treatment Centre | 4 | 0 |
| 快速應變急救車 | Rapid Response Vehicle | 3 | 0 |
| 鄉村救護車 | Village Ambulance | 3 | 1 |
| 總計 | Total | 303 | 42 |

火警統計數字 Fire Statistics

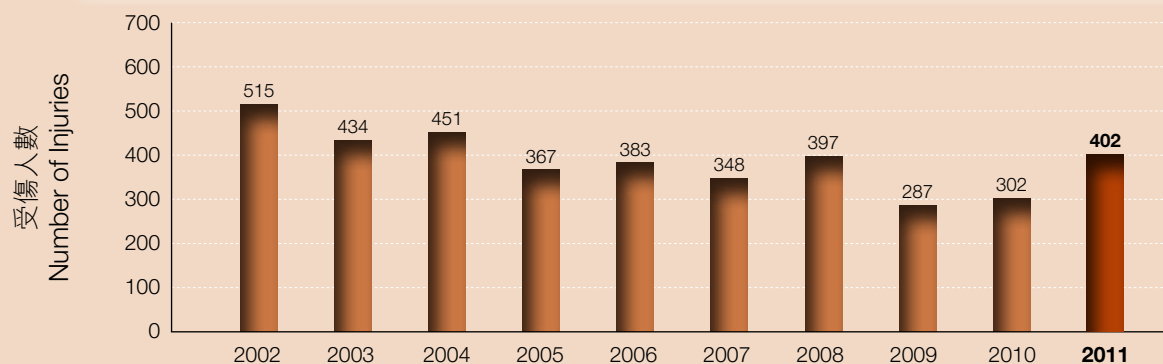
5.1 火警召喚 Fire Calls



5.2 火警中喪生的人數 Fatalities in Fires



5.3 火警中受傷的人數 Injuries in Fires



火警統計數字 Fire Statistics

5.4 火警類型 Classification of Fires

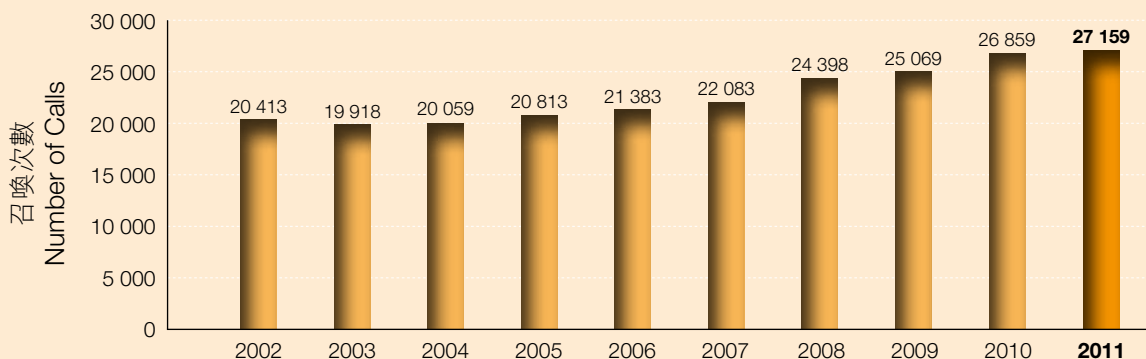
| 種類 Types | 數目 Number |
|------------------------------|---------------|
| 公眾地方 Public areas | 478 |
| 寮屋 Squatter areas | 123 |
| 屋邨 Housing estates | 1 285 |
| 工廠大廈 Factory buildings | 123 |
| 社團樓宇 Institutional buildings | 192 |
| 商用樓宇 Commercial premises | 419 |
| 住宅樓宇 Domestic buildings | 1 460 |
| 電火 Electric | 44 |
| 山火 Vegetation | 1 335 |
| 船火 Vessels | 18 |
| 車輛 Vehicles | 310 |
| 警鐘誤鳴 Unwanted Alarms | 23 889 |
| 虛報火警 False Alarms | 2 944 |
| 其他 Others | 1 568 |
| 總計 Total | 34 188 |

5.5 火警成因 Causes of Fires

| 種類 Types | 數目 Number |
|---|---------------|
| 焊接及利用乙炔切割時濺出火花 Sparks from welding & oxygen acetylene cutting | 63 |
| 兒童玩火 Children playing with matches | 43 |
| 引擎、馬達、機器過熱 Over-heating of engines, motors & machinery | 89 |
| 不小心棄置香燭、冥鏹和蠟燭等 Careless disposal of joss sticks, joss paper & candles etc. | 229 |
| 煮食爐火 Food stuff (stove overcooking) | 1 672 |
| 不小心處理或棄置煙蒂、火柴和蠟燭等 Careless handling or disposal of cigarette ends, matches & candles etc. | 1 674 |
| 電力故障 General electrical faults | 712 |
| 雜類 Miscellaneous | 1 908 |
| 虛報火警 False alarms | 2 944 |
| 蓄意放火 Deliberate act | 4 |
| 起因不明 Undetermined | 682 |
| 警鐘誤鳴 Unwanted alarms | 23 889 |
| 指定範圍內燒雜物 Controlled burning | 2 |
| 不明 Unknown | 277 |
| 總計 Total | 34 188 |

特別服務統計數字 Special Services Statistics

6.1 特別服務召喚 Special Services Calls

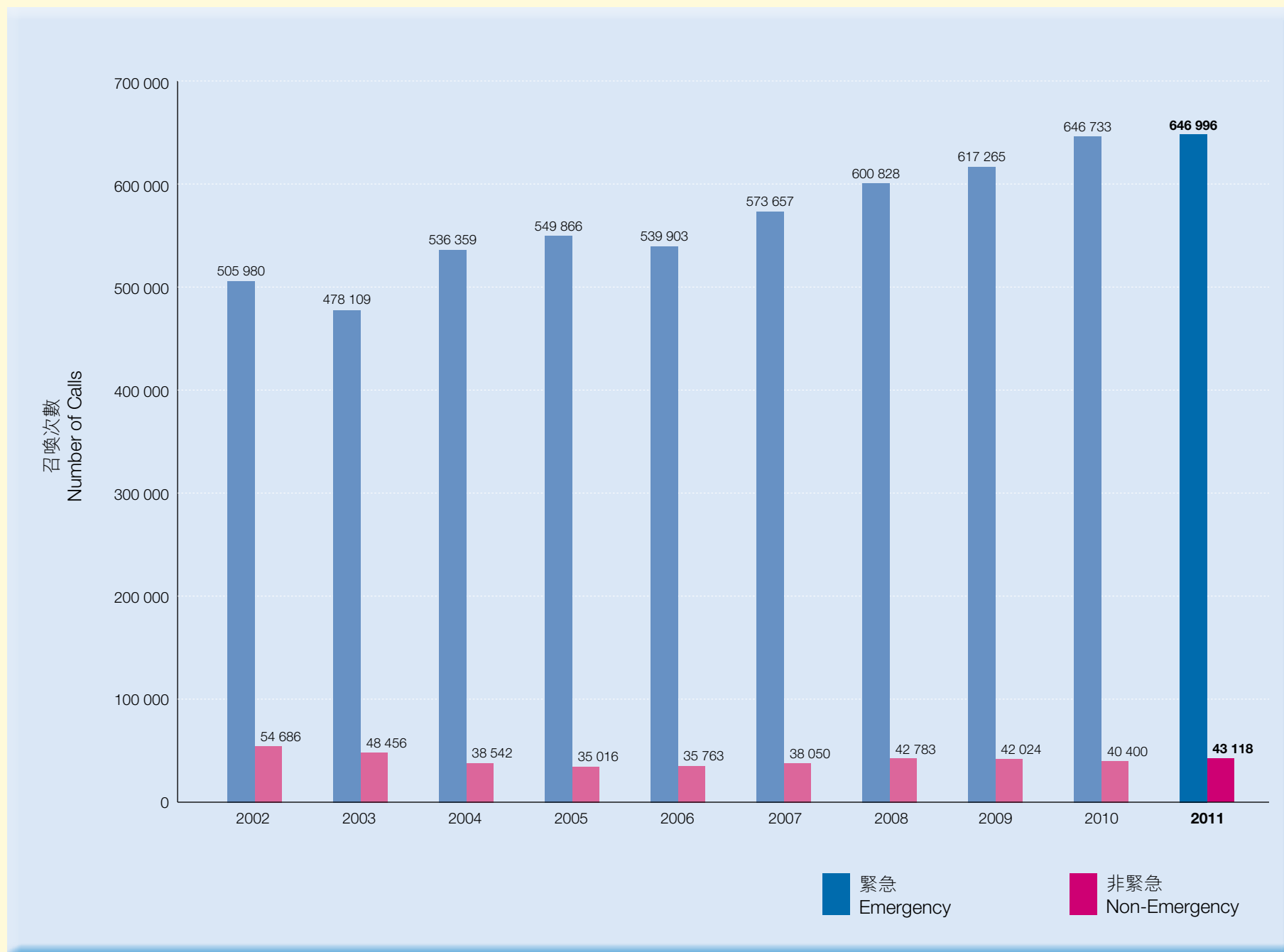


6.2 特別服務類型 Classification of Special Services

| 種類 Types | 數目 Number |
|---|--------------|
| 樓宇水浸 Flooding of premises | 6 |
| 機器夾着 Trapped by machinery | 4 |
| 企圖跳樓 Threatening to jump | 169 |
| 墮海、塘、池 Falling into water | 68 |
| 高處墮下 Falling from height | 98 |
| 上吊 Hanging | 90 |
| 易燃液體 / 氣體洩漏 Leakage of flammable liquid / gas | 399 |

| 種類 Types | 數目 Number |
|---|---------------|
| 交通意外 Traffic accidents | 218 |
| 被鎖屋內 / 反鎖屋外 Locked in / out of premises | 1 345 |
| 被困電梯 Trapped / shut in lift | 7 922 |
| 虛報個案 False alarms | 10 540 |
| 救護車個案 Ambulance cases | 5 105 |
| 其他 Others | 1 195 |
| 總計 Total | 27 159 |

救護召喚 Ambulance Calls



防火統計數字

Fire Protection Statistics

項目 Item

| | | |
|---|--|---------|
| 發出消除火警危險通知書數目 | No. of Fire Hazard Abatement Notices issued | 6 332 |
| 向危險品及木料倉庫提出檢控的次數 | No. of prosecutions instituted against dangerous goods and timber stores | 140 |
| 獲發消防安全指示的訂明商業處所數目 | No. of prescribed commercial premises with Fire Safety Directions issued | 125 |
| 獲發改善消防安全指示的指明商業建築物數目 | No. of specified commercial buildings with Fire Safety Improvement Directions issued | 16 |
| 巡查消防安全裝置及設備次數 | Inspection of FSI and equipment | 145 756 |
| 巡查學校、幼兒中心、食肆、公眾娛樂場所、卡拉OK場所及藥物倚賴者治療康復中心的消防安全情況次數 | Inspection of fire safety in schools, child care centres, food premises and places of public entertainment, karaoke establishments and drug dependent persons treatment and rehabilitation centres | 40 615 |
| 巡查商業處所及綜合用途樓宇的消防安全情況次數 | Inspection of fire safety in commercial premises and composite buildings | 32 342 |
| 巡查持牌處所的通風系統次數 | Inspection of ventilating systems in licensed premises | 10 602 |
| 巡查醫院 / 診所次數 | Inspection of hospitals/clinics | 397 |
| 舉行講座及提供諮詢服務次數 | Lectures and advisory services given | 53 446 |
| 牌照續期 / 發牌數目 | Licences renewed / issued | |
| - 木料 / 危險品倉庫 | - timber / dangerous goods stores | 4 207 |
| - 危險品車輛 | - dangerous goods vehicles | 1 879 |
| 處理審批手提滅火裝置 / 設備申請數目 | No. of applications for approval of portable fire-fighting equipment and FSI / equipment processed | 480 |
| 處理建築圖則數目 | Building plans processed | 14 010 |
| 獲發改善消防安全指示的綜合用途樓宇數目 | No. of composite buildings with fire safety directions issued | 628 |



FIRE SERVICES
HEADQUARTERS

消防處總部





香港特別行政區消防處 HKSAR Fire Services Department

香港九龍尖沙咀東部康莊道一號
消防總部大廈

Fire Services Headquarters Building,
1 Hong Chong Road, Tsim Sha Tsui East,
Kowloon, Hong Kong.

消防處網址

Internet

<http://www.hkfsd.gov.hk>

設計

Designed by

In Design HK Limited

易設計香港有限公司

印刷

Printed by

The Government Logistics Department

政府物流服務署

除另有說明外，本年報所用的「元」均指港元。自一九八三年十月十七日起，政府透過發行鈔票機制，將港元與美元掛鈎，以 7.8 港元兌 1 美元為固定匯率。

When dollars are quoted in this Review, they are, unless otherwise stated, Hong Kong dollars. Since 17 October 1983, the Hong Kong dollar has been linked to the US dollar, through an arrangement in the note-issue mechanism, at a fixed rate of HK\$7.8 = US\$1.

本年報所載資料經多方核證，力求準確無誤。如有謬誤遺漏，或因使用有關資料而引致任何損失，作為或不作為，或因依據有關資料而得出任何意見，香港特別行政區政府均無須負上任何責任。

Every effort has been made to ensure accuracy. The Hong Kong Special Administrative Region Government is not responsible for any inaccuracies, errors or omissions in this Review, or for any loss, action, or inaction arising from the use of, or for advice based on, any information therein.